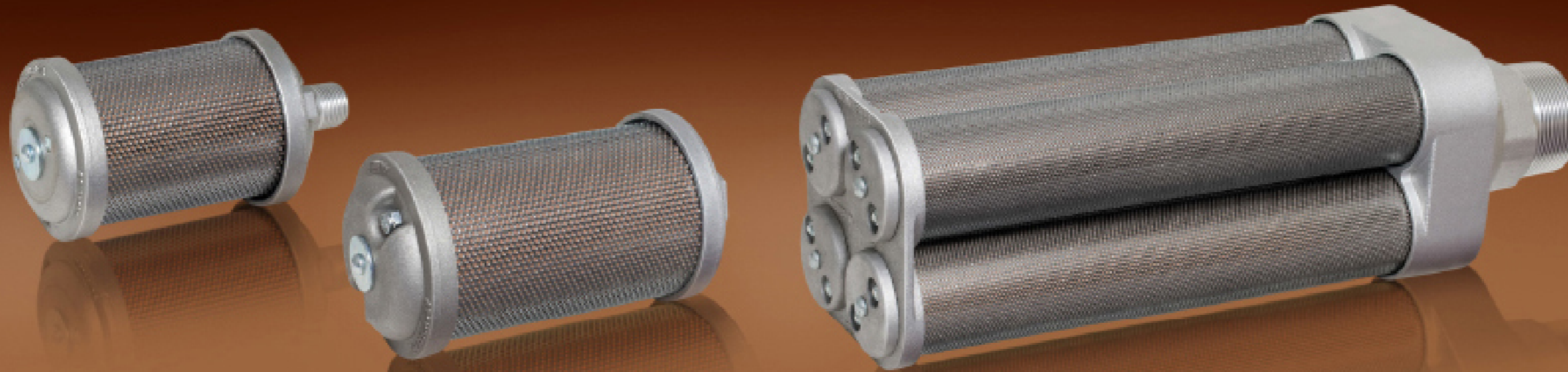
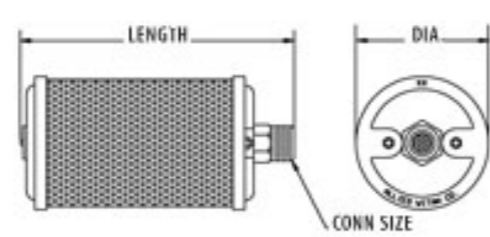


AIR DRYER MUFFLERS

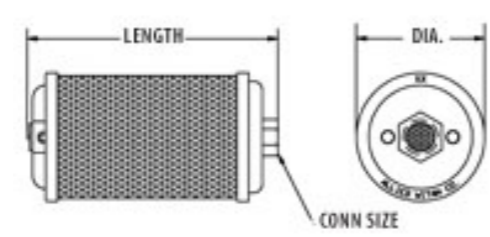


AIR DRYER MUFFLERS

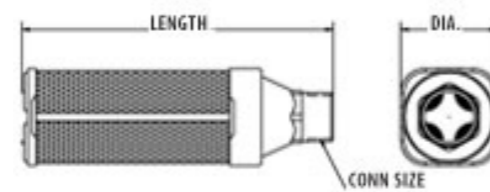
Single Chamber-Male
1/8"- 2"



Single Chamber-Female
1/8"- 2"



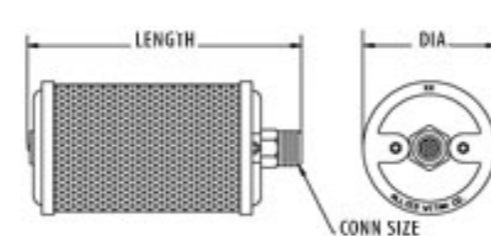
Multi-Chamber-Male
3"- 6"



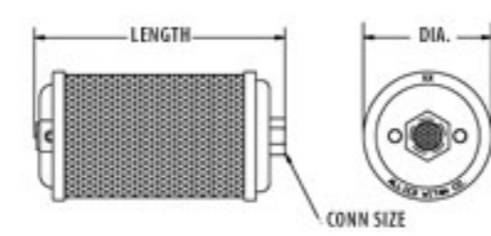
DUAL-STAGE FILTER ELEMENT TRAPS PARTICULATES FOR LONGER ELEMENT LIFE AND LESS NOISE

- Designed specifically to manage the demanding service problems associated with desiccant regenerative-type air dryers, which often expel air laden with moisture and desiccant dust
- Primary stage of dual-stage filter element traps particulates, allowing cleaner air to permeate freely through the secondary noise reduction stage
- Features a relief valve that is triggered to open if the air outflow becomes obstructed by particulate build-up and will divert air outflow directly to atmosphere
- Free desiccant fragments should be purged from an air dryer system before installing a new Air Dryer Muffler or whenever an air dryer has been recharged with new desiccant material
- Recommended for pressures up to 175 psi (12 Bar)

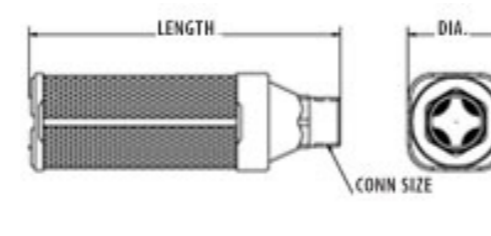
Single Chamber-Male
1/8"- 2"



Single Chamber-Female
1/8"- 2"



Multi-Chamber-Male
3"- 6"



Conn Size	Connection Thread Types						Dimensions			Replacement Element
	Male NPT		Female NPS		Male BSPT		Diameter	Length		
	Model Type	Item Number	Model Type	Item Number	Model Type	Item Number		Male	Female	
Single Chamber										
1/8	X01	0375001	R01	0475001	X01	0325001	1.84	3.12	2.81	0941001
1/4	X02	0375002	R02	0475002	X02	0325002	1.84	4.37	4.00	0941002
3/8	X00	0375000	R00	0475000	X00	0325000	2.59	5.12	4.56	0941000
1/2	X05	0375005	R05	0475005	X05	0325005	3.15	6.00	5.50	0941005
3/4	X07	0375007	R07	0475007	X07	0325007	3.40	7.18	6.68	0941007
1	X10	0375010	R10	0475010	X10	0325010	3.90	8.75	7.92	0941010
1-1/4	X12	0375012	R12	0475012	X12	0325012	3.90	8.75	8.00	0941012
1-1/2	X15	0375015	R15	0475015	X15	0325015	5.25	13.56	12.50	0941015
2	X20	0375020	R20	0475020	X20	0325020	5.25	18.87	17.75	0941020
Multi Chamber										
3	X30	0375030	-	-	X30	0325030	7.00	22.93	-	0941030
4	X40	0375040	-	-	X40	0325040	8.00	23.56	-	0941040
6	X60	0375060	-	-	X60	0325060	11.00	30.93	-	0941060